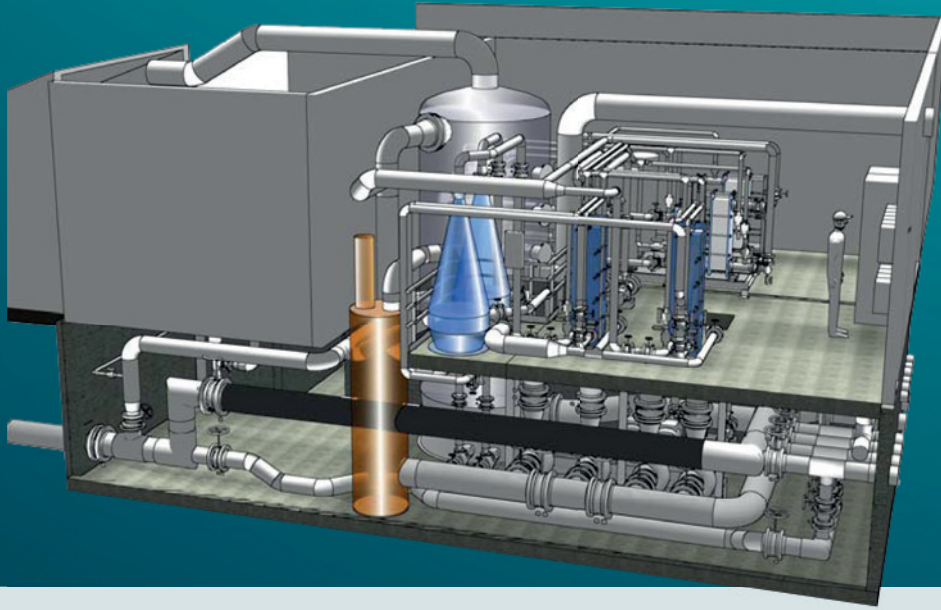


Planning

Norway's leading environment for smolt facility planning/design



Our staff resources in Ålesund make up a strong centre of excellence for the planning and construction of onshore aquaculture facilities.

- Turnkey supplier of smolt facilities.
- Specialises in water treatment.
- Designed with focus on water quality, functional recirculation and flow-through systems.
- High water quality reduces fish mortality and ensures optimum profit to the fish farmer.
- The high proportion of returning customers is a measure of our customer's satisfaction.

Planning and design

WE OFFER

Production planning

Artec Aqua AS has extensive experience of production planning. We can help to optimise production plans for any facility based on available water volumes, temperatures, production units, licences and other conditions. We have been involved in production planning for some of Norway's biggest smolt production facilities.

Budgeting

We have extensive experience of everything from repairs to development of new smolt facilities, and we can offer highly accurate budgeting services.

Project management

- Our project managers will act as the customer's point of contact throughout the process, from early planning and design to delivery, commissioning and handover.
- Whether the project is big or small, we offer secure and reliable project management, using good project management tools for the industry.
- For extensive turnkey projects we use an external planning manager to coordinate sub-contractors, for example construction, foundation work, HVAC, electrics and process equipment contractors.

Planning

- **Process flow diagram (PFD):** A PFD is prepared and thoroughly reviewed together with the customer in order to clarify all desired functions, in preparation for the planning process.
- **Piping & Instrumentation Diagram (P&ID):** A P&ID is then prepared on the basis of the PFD, showing all system and control functions. The P&ID forms a good basis for collaboration with other discipline personnel, for example the electrician, loop control technician, plumber and other relevant personnel.
- **3D plan:** We illustrate the planned solution using 3D drawings. This is a good basis for entering into a dialogue

with the customer and other parties involved, as it enables visual presentation of the planned installations. The 3D drawings also offer a unique opportunity to quality-assure the planning in relation to possible concerns and objections.

- **Isometric drawings:** The 3D drawings are used as the basis for creating isometric drawings. These drawings represent accurate specifications for the production and installation of pipes. Isometric drawings represent the optimum standard for pre-production and installation of pipes.

Part contract/Technical turnkey contract.

We have extensive experience of delivering process equipment to the smolt industry. The customer usually wants us to deal with everything from planning to installation. The installation work is carried out using our own installation workers as well as strategic partners.

Turnkey contracts

We have extensive experience of delivering process equipment to the smolt industry. The customer usually wants us to deal with everything from planning to installation. The installation work is carried out using our own installation workers as well as strategic partners.

Product development

Together with the fish farmers, our R&D department has strived for many years to improve water treatment products and processes. The effort has resulted in a range of self-developed products.